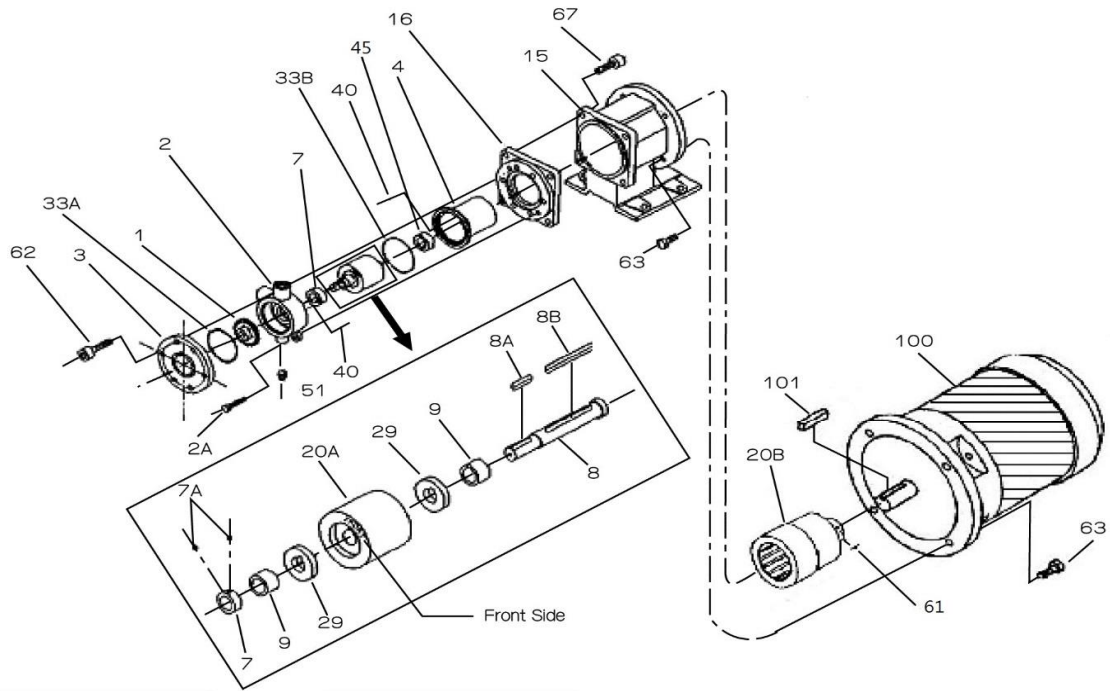


GMSW 零件材質表 (MATERIALS)



| 編號 MARK | 零件名稱 NAME OF PART | 中文名稱 | 材質 MATERIALS | 數量 No.REQ'D |
|------------|--|--------|----------------------|----------------|
| 1 | IMPELLER | 葉輪 | SUS316 | 1 |
| 2 | CASING | 前蓋 | SCS14 | 1 |
| 2A | CASING BOLTS | 前蓋螺絲 | SUS304 | 2 |
| 3 | CASING COVER | 後蓋板 | SCS14 | 1 |
| 4 | REAR CASING | 後蓋 | SUS316 | 1 |
| 7 | SET RING | 固定環 | SUS316 | 1 |
| 7A | SET SCREW | 外磁固定螺絲 | SUS316 | 2 |
| 8 | SHAFT | 軸心 | SUS316 | 1 |
| 8A | IMPELLER KEY | 葉輪固定鍵 | SUS316 | 1 |
| 8B | COUPLING KEY (P) | 內磁固定鍵 | SUS316 | 1 |
| 9 | SLEEVE | 軸心襯套 | SSiC | 2 |
| 15 | FRAME ADAPTER | 馬達座 | FC200 | 1 |
| 16 | FLANGE (CASING) | 泵頭固定框架 | SUS304 | 1 |
| 20A | MAGNET MAGNET COUPLING (P) | 內磁 | RARE EARTH SUS316 | 1 1 |
| 20B | MAGNET MAGNET COUPLING (M) | 外磁 | RARE EARTH SS400 | 1 1 |
| 29 | THRUST RING | 止推環 | SSiC | 2 |
| 33A | O RING | O環 | PTFE | 1 |
| 33B | O RING | O環 | PTFE | 1 |
| 40 | PIN | 襯套止動螺絲 | SUS316 | 2 |
| 45 | BUSHING | 軸受 | SSiC | 2 |
| 51 | PLUG | 洩水螺絲 | SUS316 | 1 |
| 61 | SET SCREW | 外磁固定螺絲 | SCM435 | 1 |
| 62 | CASING BOLTS | 前蓋螺絲 | SUS304 | 6 |
| 63 | HEXAGON HEAD BOLT (MOTOR) | 馬達鎖附螺絲 | SUS304 | 4 |
| 67 | HEXAGON SOCKET HEAD CAP SCREW (CASING) | 前蓋鎖附螺絲 | SUS304 | 6 |
| 100 | MOTOR | 馬達 | — | 1 |
| 101 | COUPLING KEY (M) | 馬達鍵 | S45C | 1 |